



We do what ever it takes to make your maps perfect .

Kartmøte 2012, Ås

OCAD AG
Mühlegasse 36
CH-6340 Baar / Schweiz
www.ocad.com

OCAD[®]
the smart software
for cartography

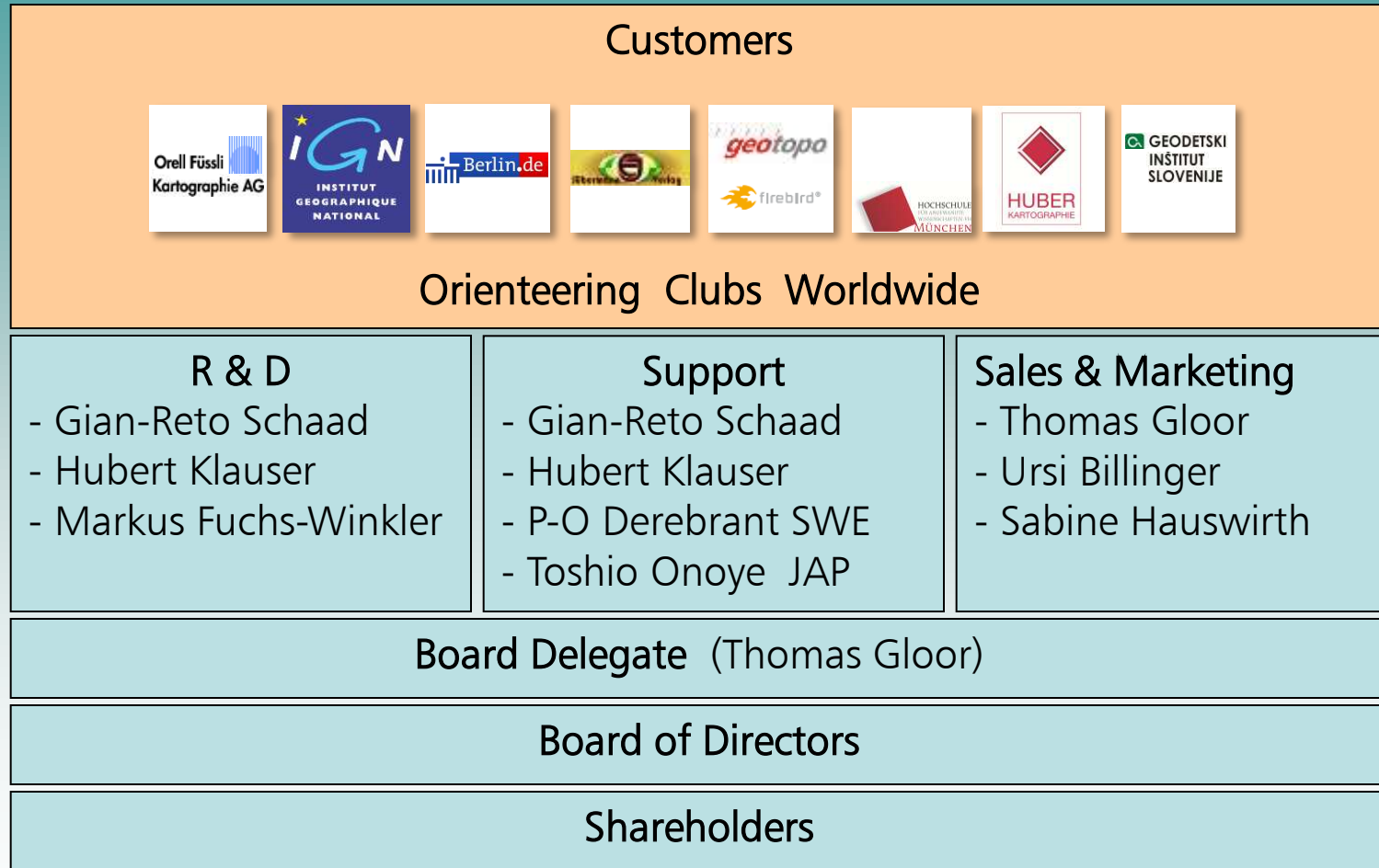
Worldwide use of OCAD.



OCAD AG
Mühlegasse 36
CH-6340 Baar / Schweiz
www.ocad.com

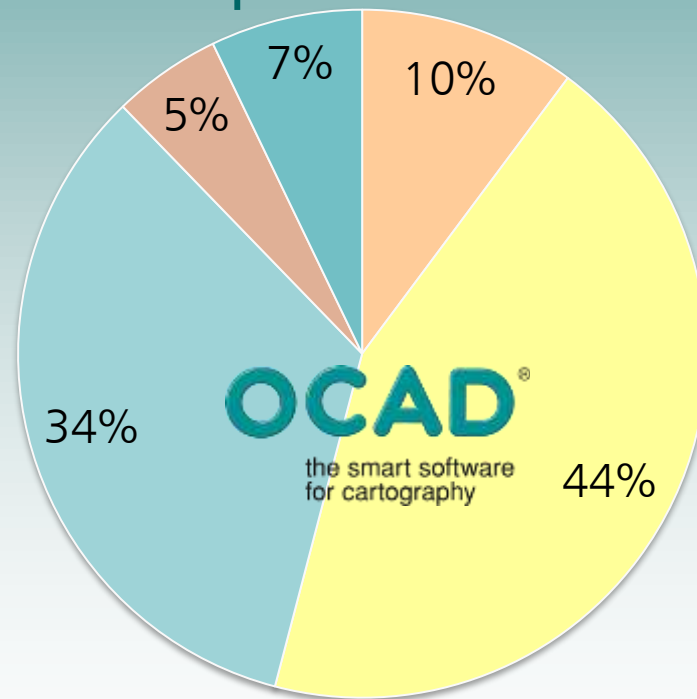
OCAD®
the smart software
for cartography

Organisation of OCAD Inc.



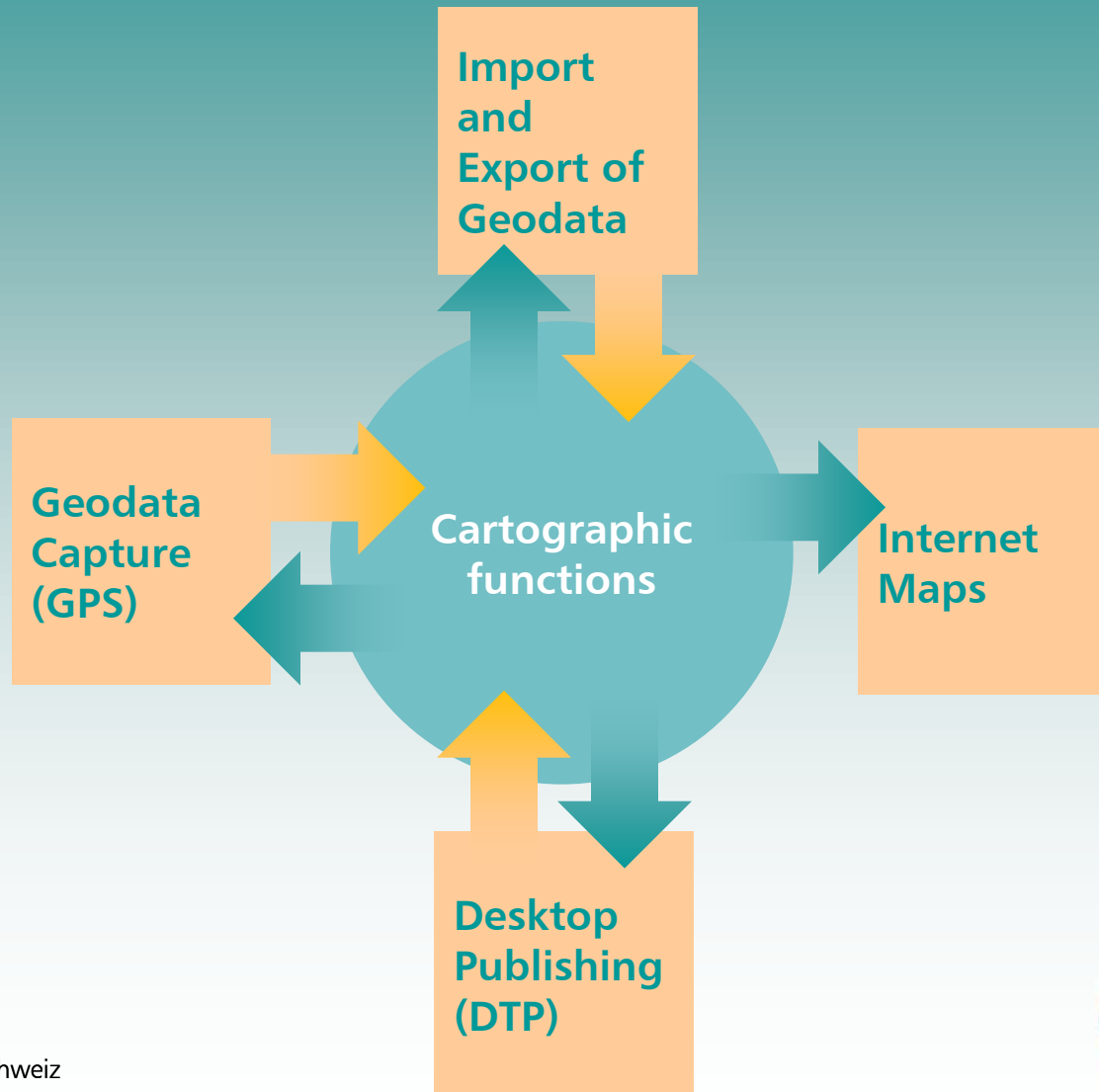
Worldwide use of OCAD.

- Graphic user interface in 13 languages
- in over 63 countries present



- Switzerland
- Scandinavia
- Europe (without Scandinavia)
- North America
- Asia Pacific

Positioning of OCAD.



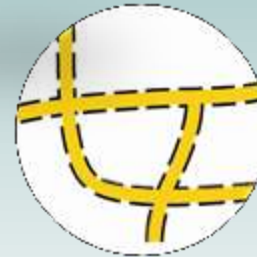
Cartographic function.



Symbol editor



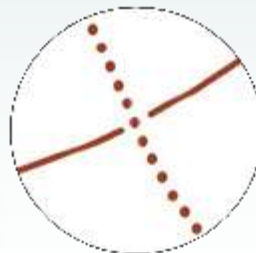
Bézier curves



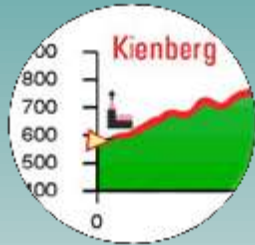
Influencing
Dash lines



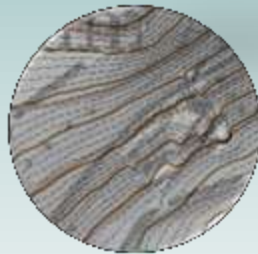
Line tracing
Snapping



Spacing



Layout

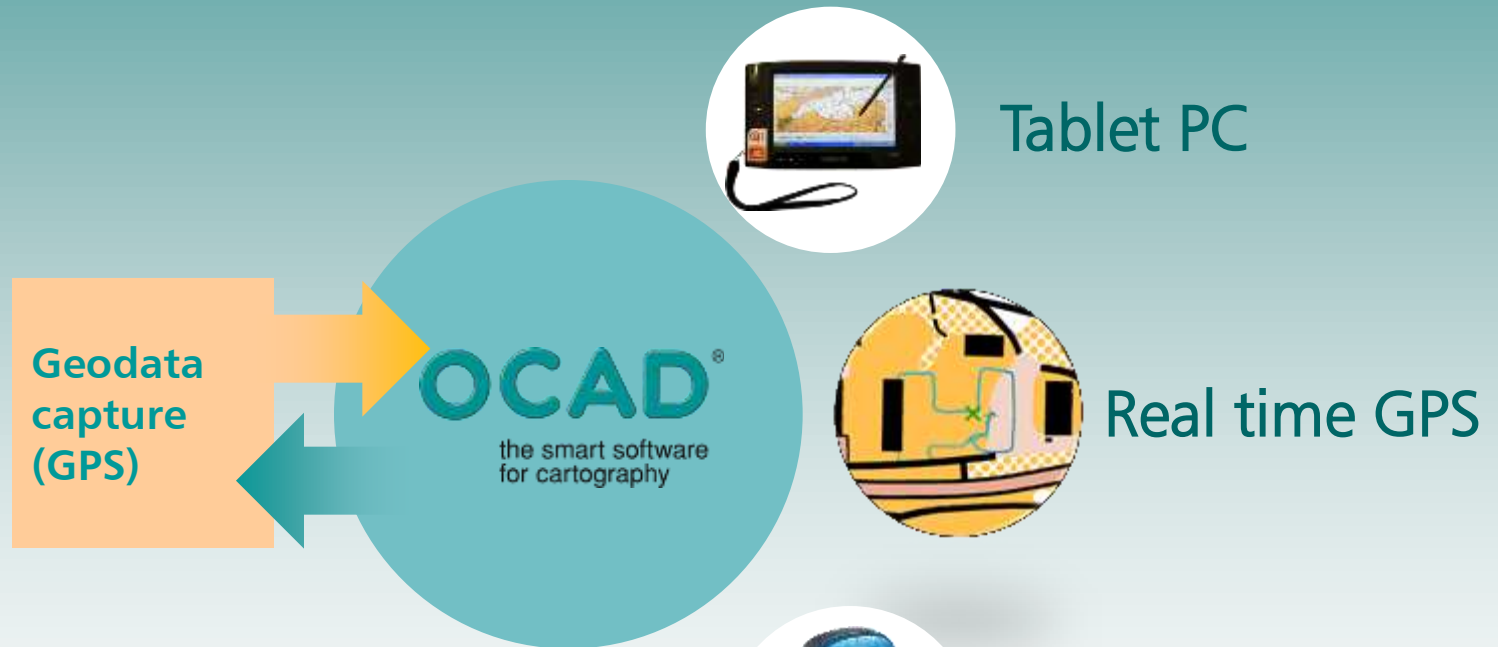


DEM
contour lines
relief shading



Rubber
Sheeting

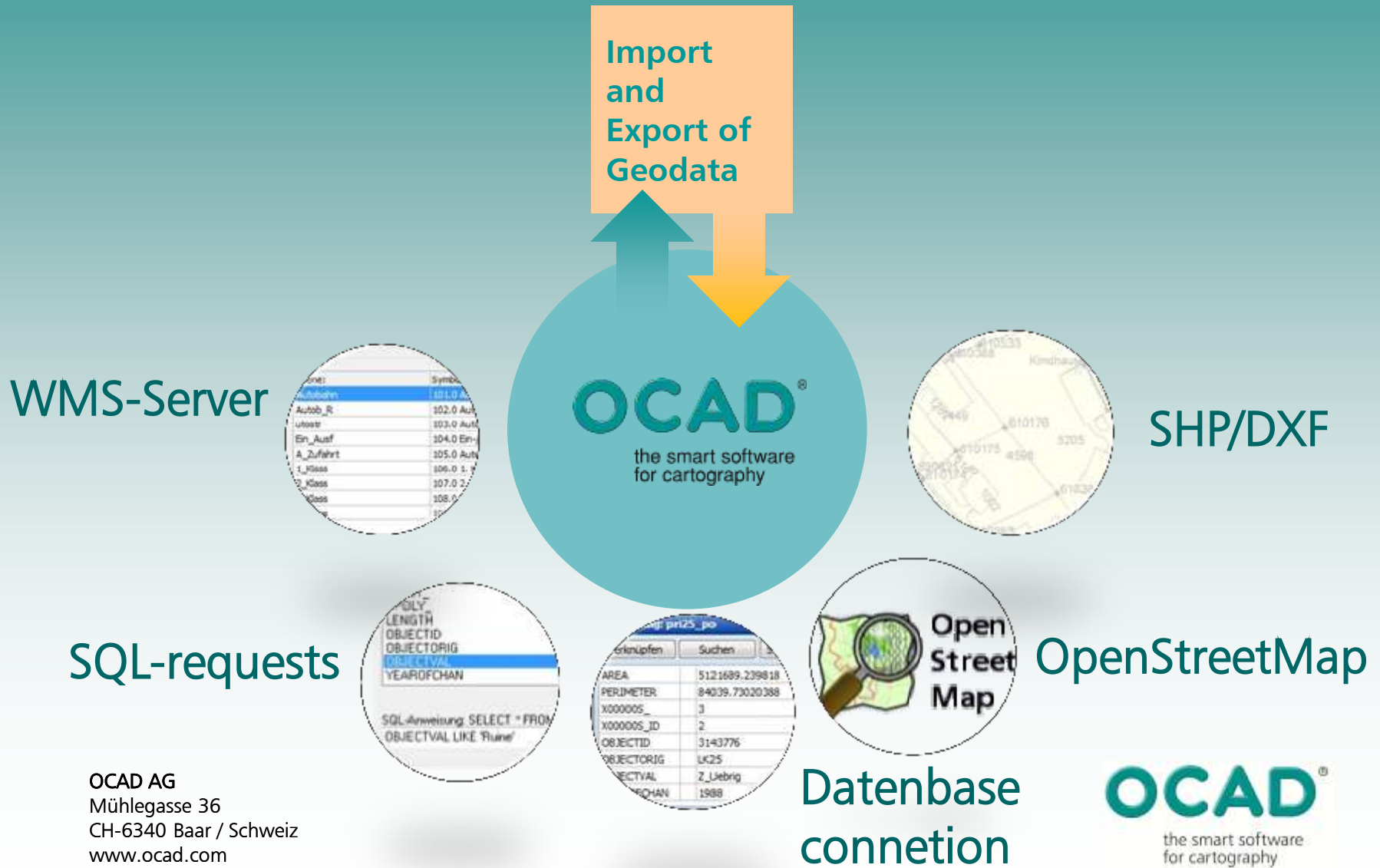
Geodata Capture.



Laser Range Finder



Import & Export of Geodata.



Internet Maps.

SmartPhone
iPad



KML/KMZ
GoogleEarth



OCAD[®]
the smart software
for cartography

Internet
Maps

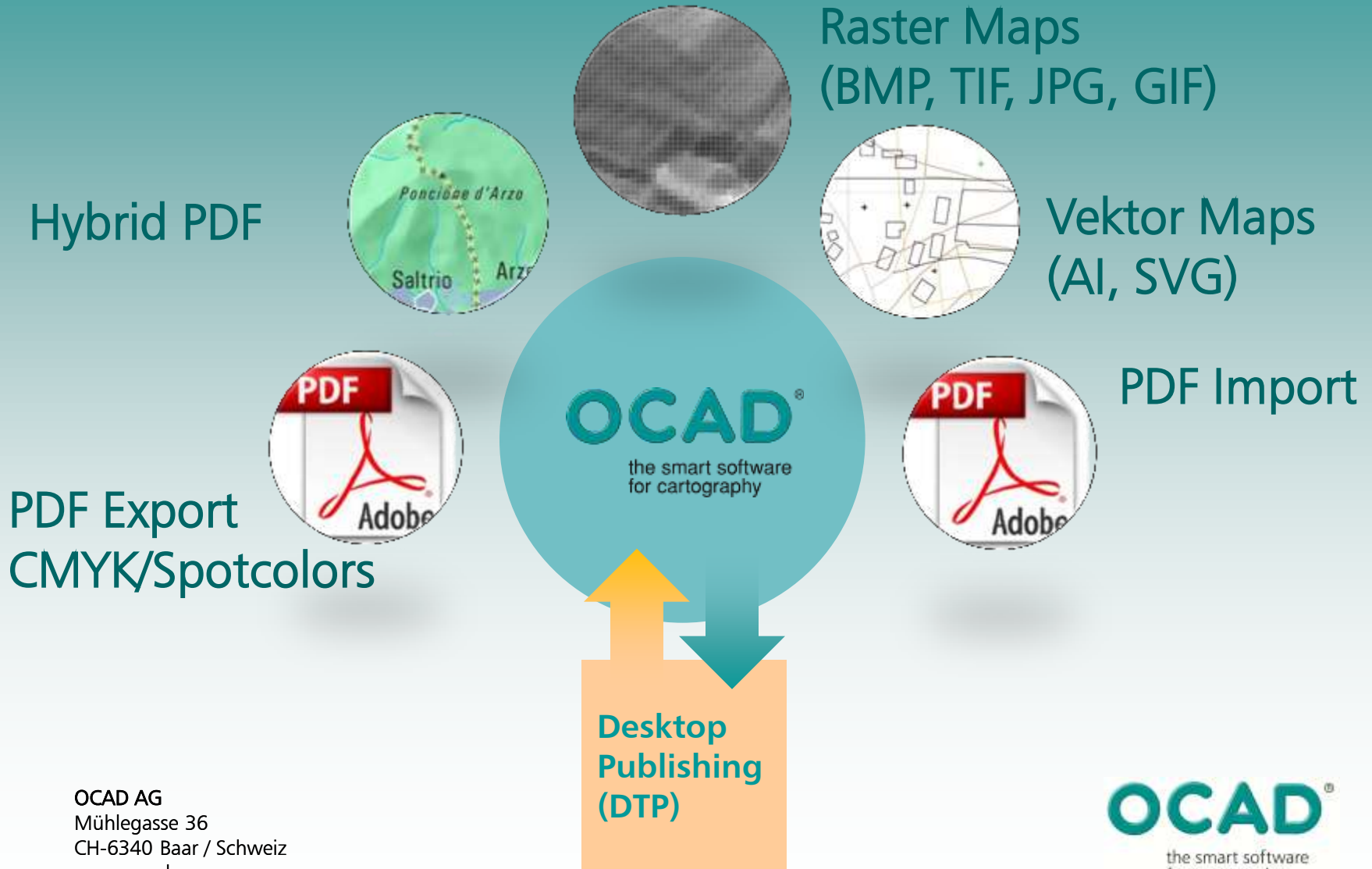
OIM Wizard
OpenLayers



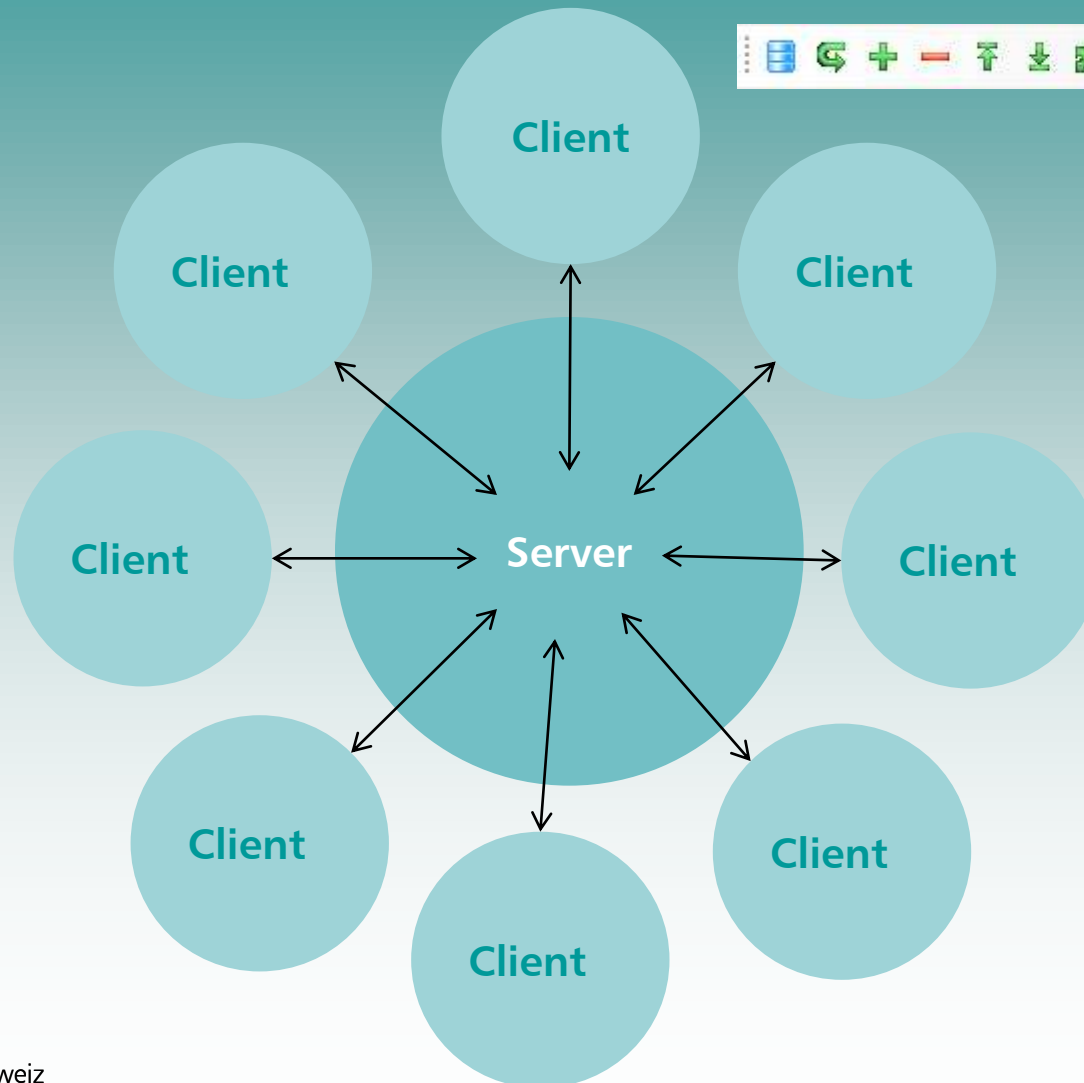
OCAD AG
Mühlegasse 36
CH-6340 Baar / Schweiz
www.ocad.com

OCAD[®]
the smart software
for cartography

Desktop-Publishing (DTP).



Client Server Solution.



What's new OCAD 11?

File

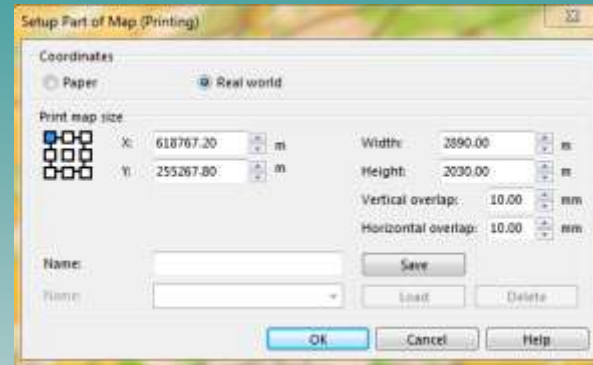
- Send File by Email

Print

- Reference point in partial map setup added
- Save and reload different print ranges

Import

- Support Freehand XML format
- Multiple file import for Shape, DXF, GPX, NMEA and XYZ format



What's new in OCAD 11?

Import

- Import shape: Coordinate system transformation (WGS84 supported), support database type Access and Excel, support code page
- PDF: Save crt file with layers
- Option to import colors at the top of the color table

Export

- OIM with HTML and JavaScript(OpenLayer)
- JPEG: Quality setting option
- US Tabloid format added

What's new in OCAD 11?

Server/Client

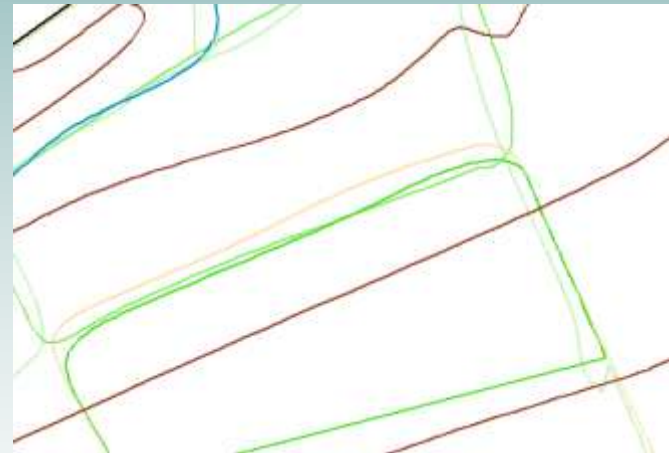


- Connect/Disconnect PostGre/GIS
- Import Map
- Check Out Selected Objects
- Check in Selected Objects
- Show Checked Out Objects
- Generate Map Preview

What's new in OCAD 11?

View

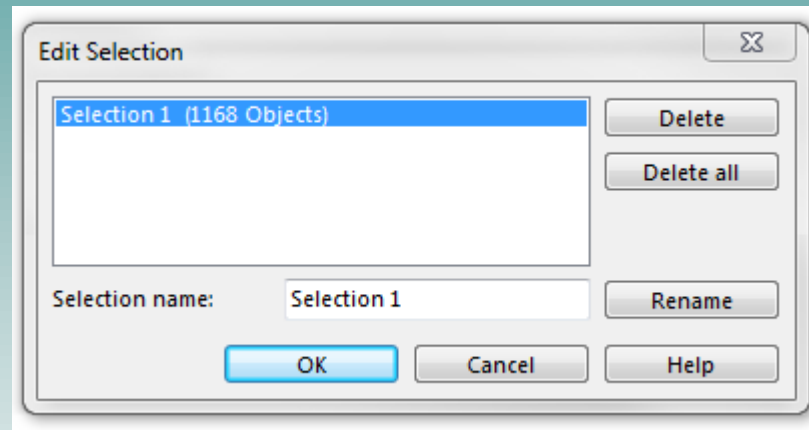
- Keyline
- Zoom to Selected Objects
- Show Rulers
- Ruler Guides



What's new in OCAD 11?

Select

- Select All
- Clear Selection
- Invert Selection
- Save Selection
- Reload Selection
- Edit Selection
- Select Group



What's new in OCAD 11?

Drawing

- Cut area: Rectangular mode enabled, select always the smaller part of the two new areas
- Crop Objects
- Move Parallel with Distance
- Reshape
- Interpolate Objects
- Move and Duplicate
- Mirror and Duplicate



What's new in OCAD 11?

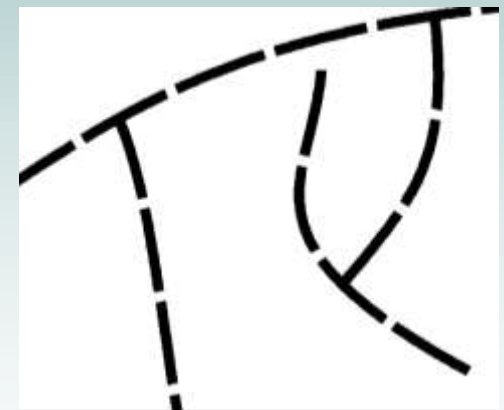
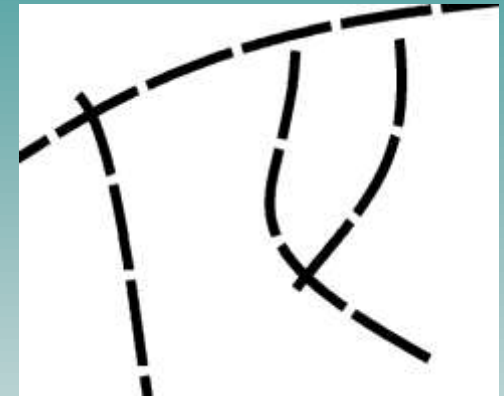
Drawing

- Convert to Layout Object
- Smooth: Douglas-Peucker algorithm
- Create Color Gradient
- Group and Ungroup
- Insert Glyphs
- Measuring: More precise Bezier curve measuring
- Fast object moving (Shift + arrow)

What's new in OCAD 11?

Topology:

- Select Duplicate
- Select Self Intersected Objects
- Close Area Objects
- Remove Overshoots and Undershoots
- Insert Intersections



What's new in OCAD 11?

Drawing

- Stairway drawing mode
- Multiple point objects drawing mode (ex. for avenues)
- Laser distance meter drawing mode
- Snapping drawing and editing option
- Draw ellipse by entering numeric entries of a,b and angle
- Draw rectangle by entering x, y, width and height
- Live Preview option
- Option to close automatically open areas during drawing

What's new in OCAD 11?

Symbol

- New symbol: Create default symbol icon when creating a new symbol
- Select Symbol by Symbol Number
- Select Symbol by Font
- Replace Symbols Color
- Replace Symbols Font
- Protect Image Objects

What's new in OCAD 11?

Symbol Editor

- Colored color combo box
- Scale up/down symbol elements
- Center selected symbol elements
- Make screenshot for symbol icon
- Warning if symbol contains elements with undefined color

Symbol Icon Editor

- Icon palette with predefined icons
- Pick color tool added

What's new in OCAD 11?

Map

- Create Map Grid: Support real world coordinates,
- Create WGS84 Grid
- Coordinate System: User defined grid, load parameters from projection file
- Export Selected Objects
- Center Map to Drawing

Transformation

- Mirror map
- Change coordinate system

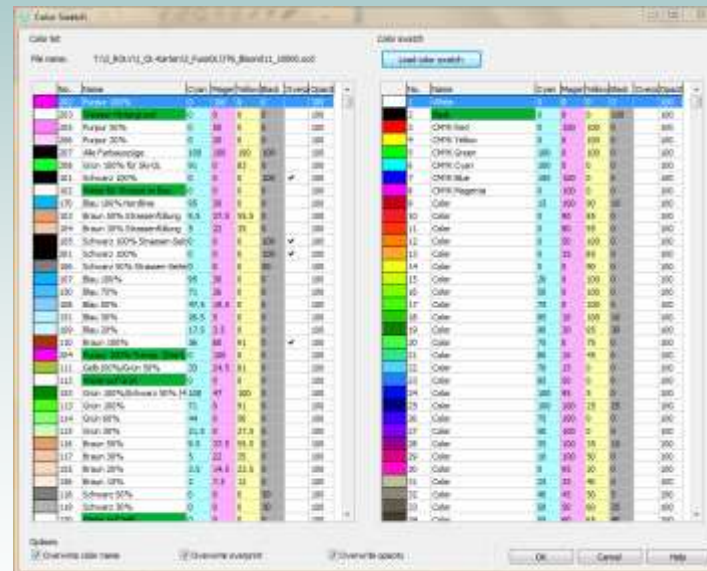
What's new in OCAD 11?

Rubbersheeting:

- Show no. of rubber sheeting points
- Option to exclude protected objects or layout objects

Area Color

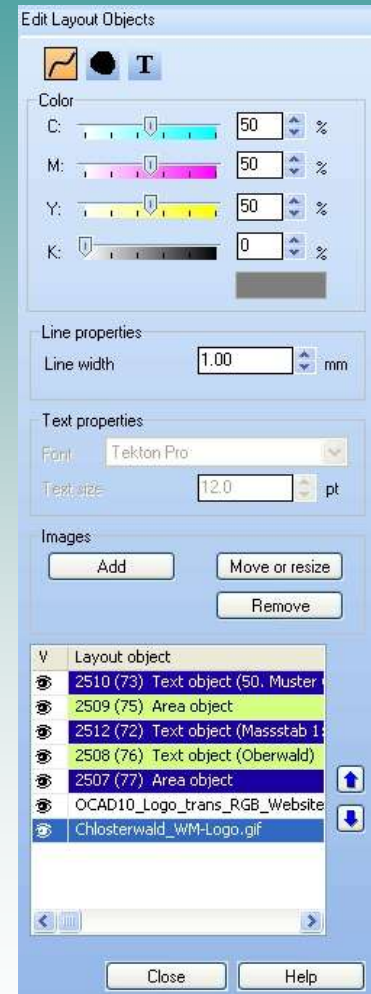
- Drag and drop colors
- New color picker
- Color swatch



What's new in OCAD 11?

Layout

- Edit Layout Objects
- Import Layout
- Save Layout
- Hide
- Add North Arrow or Scale Bar
- Add Map Legend
- Create Graticule Name Index
- Create Name Index



What's new in OCAD 11?

Database

- Borland Database Engine (BDE) replaced with ActiveX Data Objects (ADO) for database access
- Create new database: Access and Excel supported
- Rename dataset added
- Special field 'Angle' added
- Update special fields function added
- SQL query: Delete, load and save query
- Add texts by records: Object offset added.

What's new in OCAD 11?

Background Map

- WMS - Web Map Service
- Support PNG format
- Support 32bit RGB TIFF format
- Rescale background maps when changing map scale
- Background map info dialog also for raster background maps

What's new in OCAD 11?

DEM

- Import: Support LAS and SRTm (*.hgt) format
- Support sub-meter cell size for OCAD DEM
- Merge DEM
- Calculate DEM Difference
- Calculate Slope Gradient
- Classify Vegetation Height
- Profile export to OCAD: hiking time calculation, labels and symbols at stopovers

What's new in OCAD 11?

DEM

- Import: Support LAS and SRTm (*.hgt) format
- Support sub-meter cell size for OCAD DEM
- Merge DEM
- Calculate DEM Difference / Calculate Slope Gradient
- Classify Vegetation Height
- Profile export to OCAD: hiking time calculation, labels and symbols at stopovers

GPS

Connect to "TruPulse 360°B" Laser Distance Meter

What's new in OCAD 11?

Options

- Additional key combinations for shortcuts
- Backup and Restore Options

Help

- New OCAD Wiki Help: <http://www.ocad.com/en.wiki>
- More graphic hints

What's new in OCAD 11?

Course Setting

- Renumber all control codes by entering a new first code
- Courses dialog: Show course length and number of controls
- Relay: New algorithm to distribute the relay variations more regularly to the teams
- Insert course object to a list of courses
- Delete course object from a list of courses
- Move control number for all courses that use it
- Edit connection line for all courses that use it

What's new in OCAD 11?

Course Setting

- New dialog to edit text control description
- Create automatic text control description from IOF symbol description
- Control description positioning at top or bottom left corner
- Preview: Show thin connection line between control circle and control number when moving control number in preview
- Course with map change: add number of part behind course name: W21 (1), W21 (2) etc.

What's new in OCAD 11?

Course Setting: Statistic

- Highlight unused course objects in course statistics dialog
- Leg statistics added (number of courses / runners per leg)
- Control/Course diagram
- Detect identical courses and courses without start or finish
- Import course definition from event software
- New IOF XML Version 3.0 exchange format supported
- Export course maps: Export multiple courses to one course map file (only normal courses)
- Export relay variation codes for all runners



We do what ever it takes to make your maps perfect .

Kartmøte 2012, Ås

OCAD AG
Mühlegasse 36
CH-6340 Baar / Schweiz
www.ocad.com

OCAD[®]
the smart software
for cartography